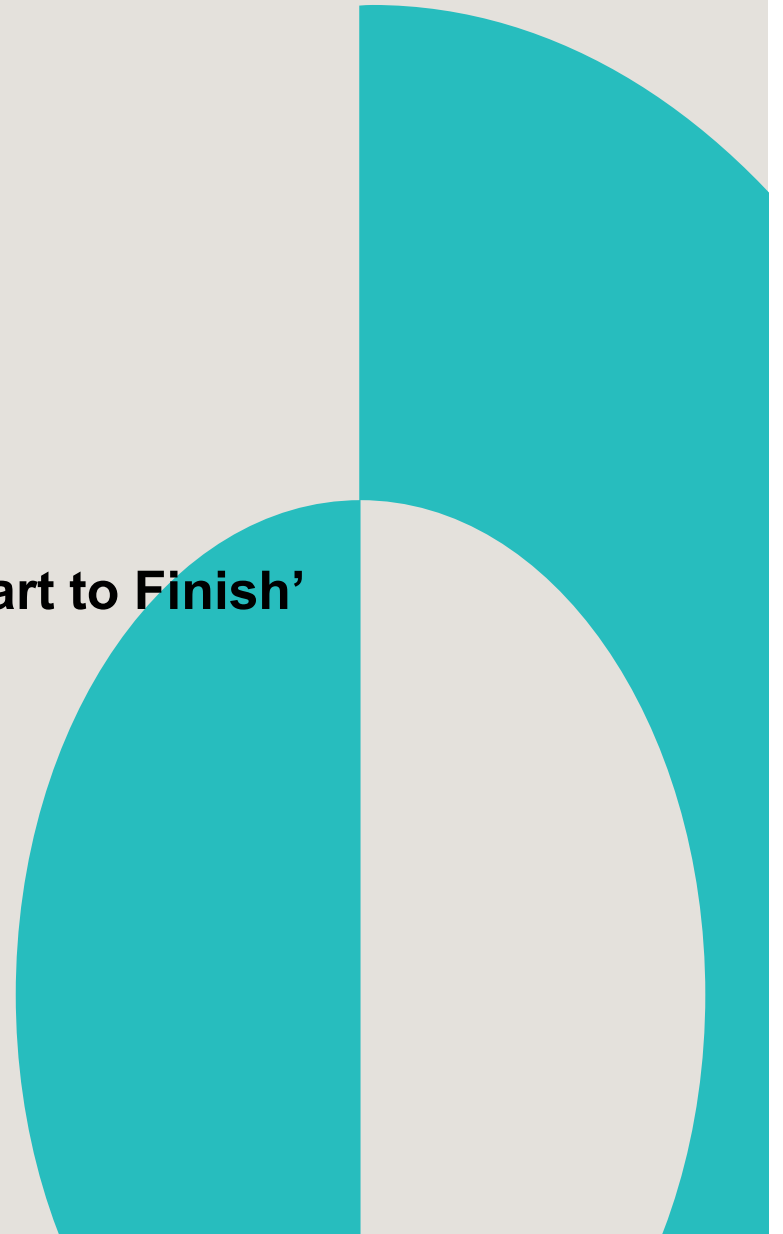




Mott MacDonald

Supporting the Polish Nuclear Project 'Start to Finish'

Warsaw 14 November 2017



Agenda

**Committed
t+ Safety**



Safety is Our No. 1 Priority



NPP support capability
From Start to Finish

**Multinational Multidisciplinary –
Employee Owned**

£1.4 billion

Revenue

17000

Staff

200

Permanent
offices
worldwide

140

Countries

3000

Employed
in Energy
Sector.

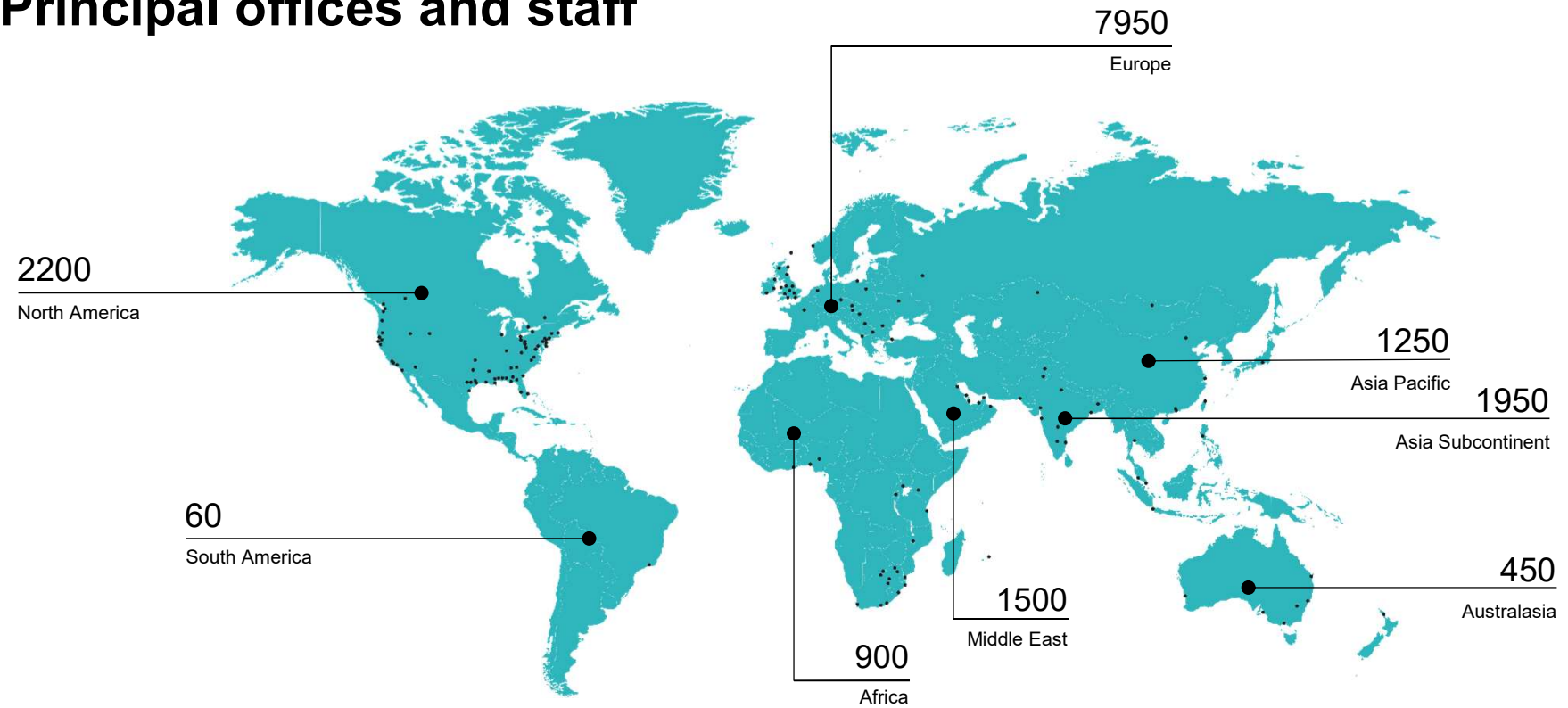
100%

Employee
Owned
and Debt
free

500

Working in
nuclear
sector.

Principal offices and staff



Where We Work



Buildings



Communications



Power



Education



•Environment



•Industry



International
development



Transport



Urban
development



Health



•Oil and gas



•Water

Zf £

Making
the
Project
Viable



Investor Advice

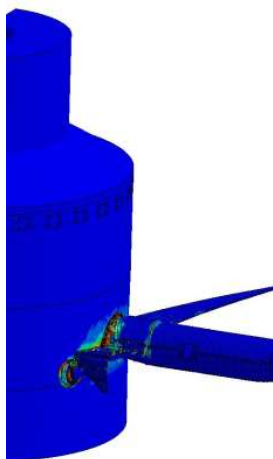
Nuclear New Build

Environmental
Services

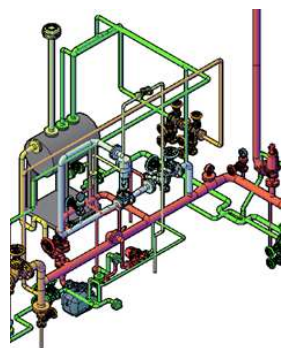
Civil Structural
Engineering

Architectural

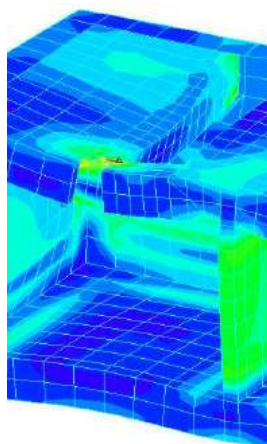
Safety Case



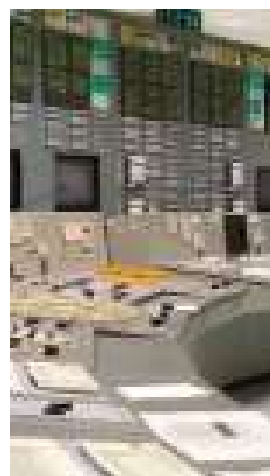
Aircraft Impact
Assessment



Mechanical design



Seismic Analysis



E,C & I



Computation
Fluid Dynamics

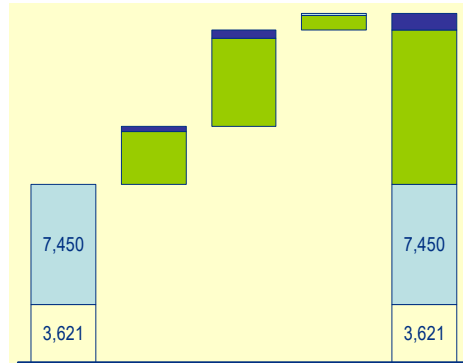


Decommissioning

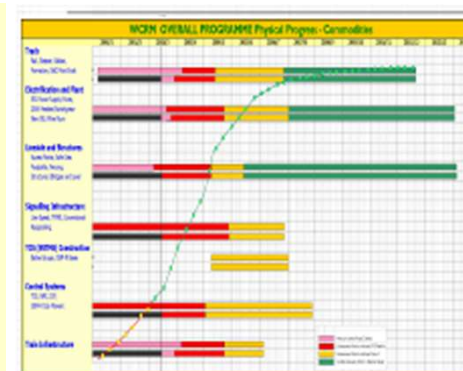
Multi-skilled Programme Delivery



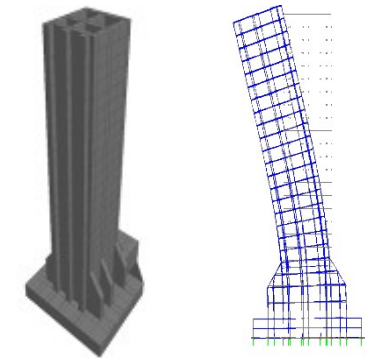
Whole life planning



Project finance



Programme management



Design



Construction supervision

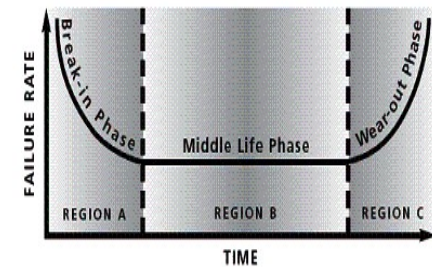


Training and development



Asset management and operations advice

Figure 1 The Bathtub Curve



Infrastructure maintenance

Nuclear Power Sector Capability requirements



Nuclear Power Sector Services

Development

Govt. Policy and
commercial issues

Lenders Engineer

Owners Engineer
support

Development and
Deployment
Strategies

Project Company
support

Advisory

Strategic Advisory
Roles

Procurement Support

Programme and
Project Management

Cost Consultancy

Licensing and
Operational advice

Environmental and
Social

Design and Construction

Detailed Civil
Engineering
Design

Architectural and
Structural

Power Plant

Building Services

Balance of Plant –
CWS, Marine,
Auxiliary Systems

Nuclear and Power Sector – Development & Advisory Support

Power market economics – Supporting Governments and Developers

Contracts for difference support

Procurement studies and

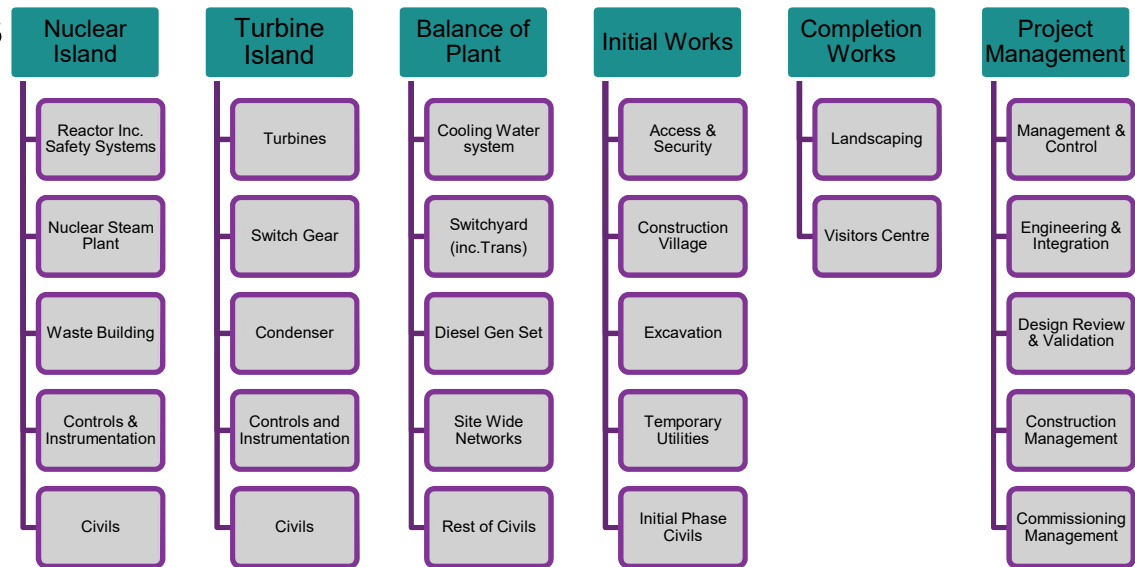
Roadmapping of Programmes

Capability reviews

Feasibility studies

Bankability studies

Supplier evaluation



Nuclear Power Government, Investor and Developer advice

New Build

- Support to **Governmental** and commercial Banks for 2 new nuclear power plants in UK
- Wrote UK Cost of Generation report
- Provide advice to UK **Government bank** on CfD issues
- Procurement support to potential buyer of **Horizon Nuclear Power**
- Procurement support to potential buyer of new nuclear power project in UK
- Feasibility reports for new entrant to UK nuclear power sector
- Post Fukushima advice to **Japanese governmental banks**
- Advised **Japanese and American governmental investors** on a proposed new build nuclear power plant in US
- Bankability study for new European medical reactor
- Advised developer on acceptability of programme from acceptance by **US DOE** for new build loan scheme.
- Advised **Asian reactor vendor** on entry strategy to UK and an african nuclear market
- Advised **Asian EPC supplier** on entry strategy to UK nuclear market
- Advised **ENEC** on Roadmap to develop, procure, and construct its programme
- Wrote procurement strategy for **Fennovoima**
- Wrote roadmap to FID for **Fennovoima**
- Advised on development strategy for **Japanese new entrant** to UK market
- Advised **UK Government** on power sector economics



Thank you

Jon.Coniam@mottmac.com

+44 77 3617 1966

Mariusz.Konopka@mottmac.com

+48 22 2953 824

